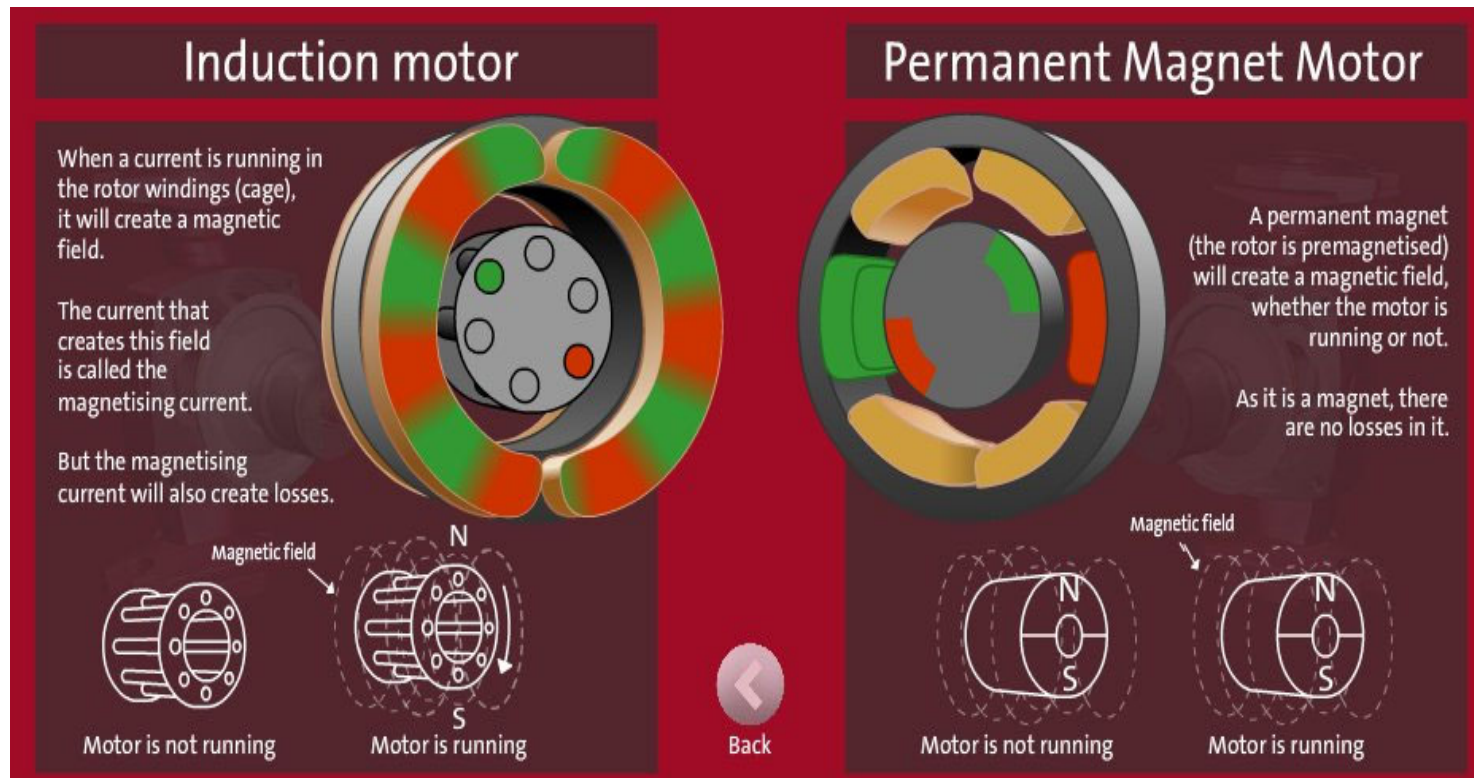


GRUNDFOS

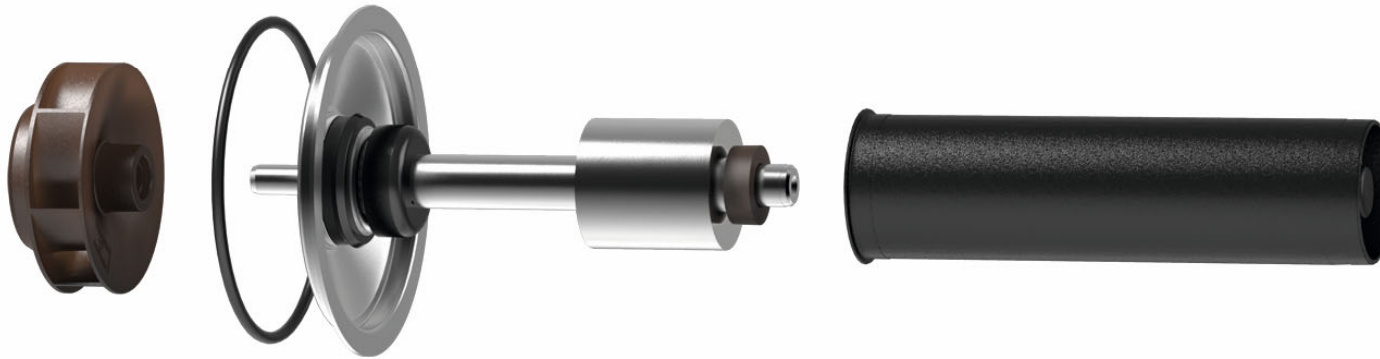


High Efficiency Motor



*** An ECM motor uses approximately 50% less energy than a comparable standard induction motor**

ECM Wet Rotor Design



Impeller

- PES (Polyethersulfone)
- High efficient design
- Improved hydraulic through flow analysis and 3D development tools

Magnet Rotor

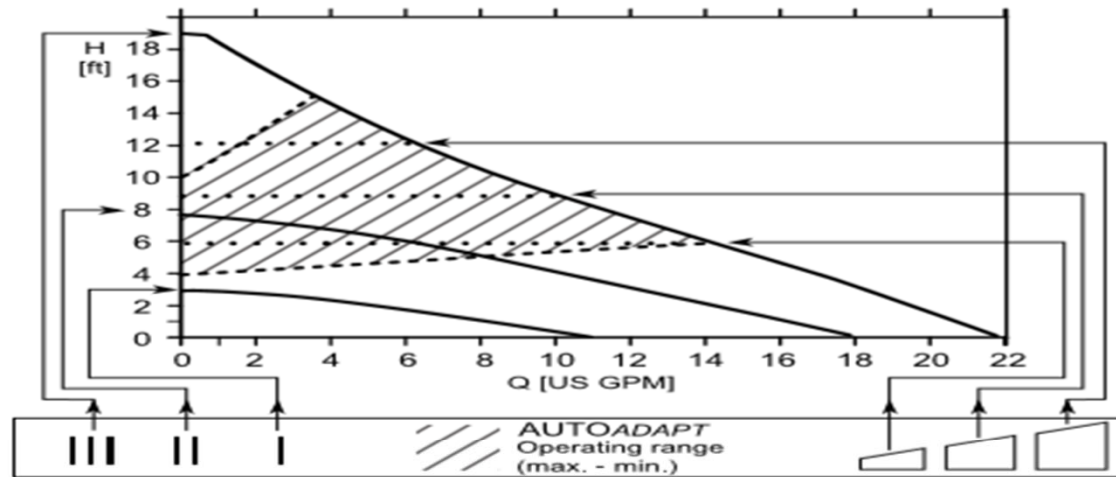
- High Performance neodymium magnet rotor
- Increases motor efficiency

Rotor Can

- Composite Rotor Can
- Minimizes power loss
- Increases motor efficiency

7 Control Modes within one pump

ALPHA2



TM04 6025 0611

Approximate power usage

Speed setting		Min. [W]	Max. [W]
High, fixed speed	III	39	45
Medium, fixed speed	II	15	30
Low, fixed speed	I	5	8
Constant pressure		8	45
Constant pressure		14	45
Constant pressure		22	45
AUTO _{ADAPT} TM		5	45

Lets look at the Alpha



ALPHA2 26-99 Features

